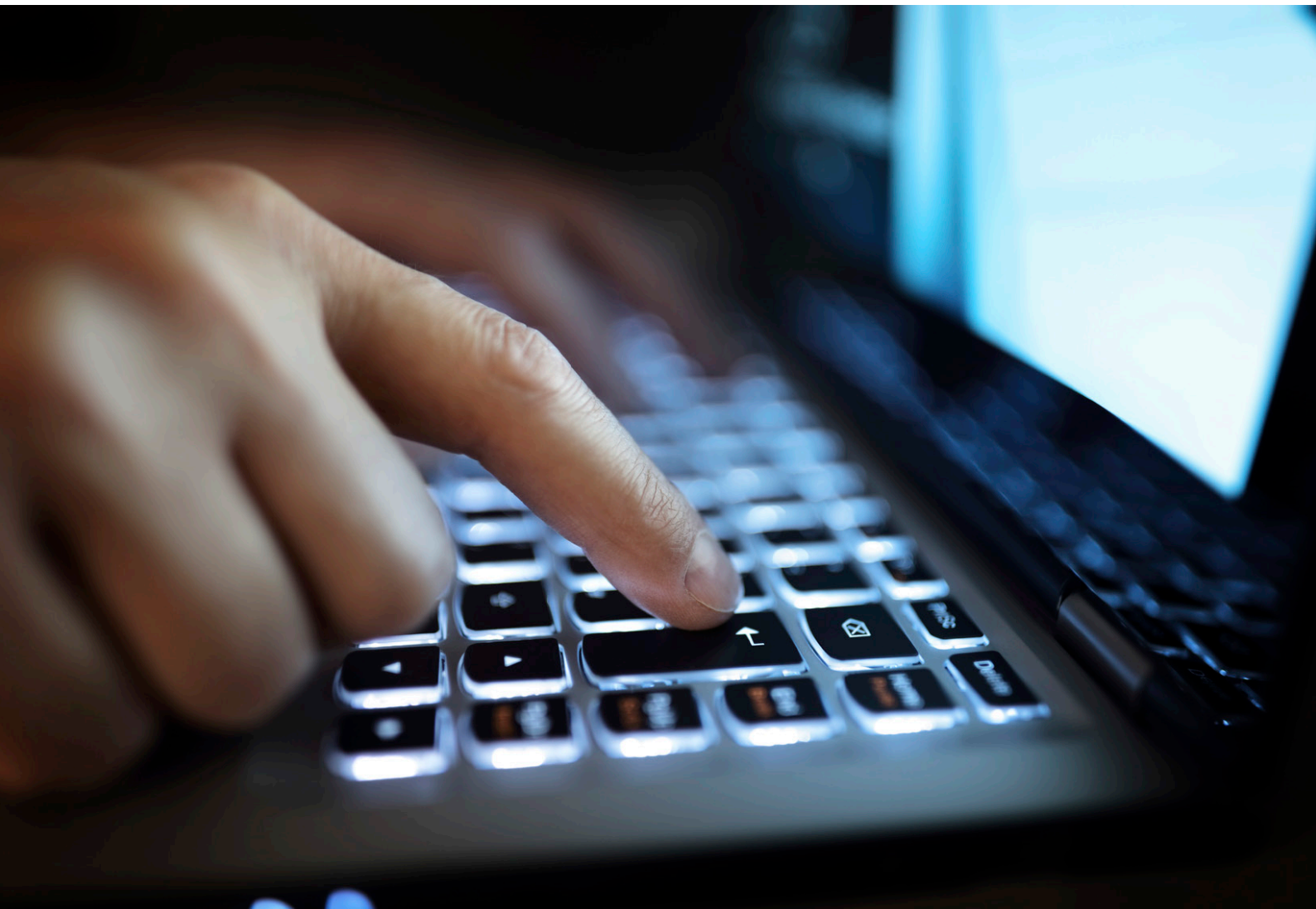


SECURITY MANAGEMENT SYSTEM



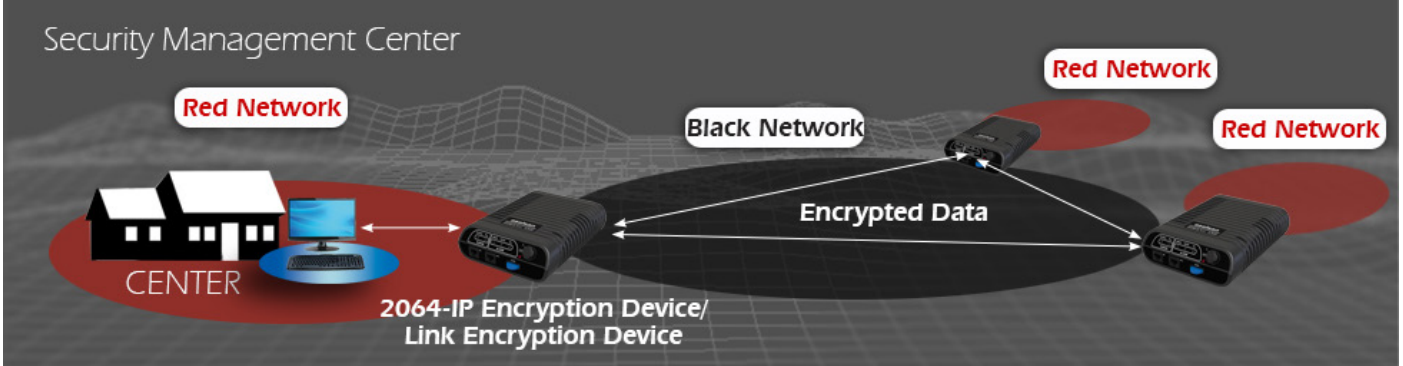
SECURITY MANAGEMENT SYSTEM

ASELSAN Security Management System is designed to remotely control and manage 2064 IP Encryption Device (2064 IPED) and 2064 Link Encryption Device (2064 LED) designed and developed by ASELSAN.

Security Management System (SecMan) has the ability to poll IPED and LED devices periodically. Hence, the accessibility of the devices at any time instant can be observed by the use of Security Management System. SecMan also monitors the versions of cryptographic parameters on the devices and update them remotely when necessary.

SecMan is capable of displaying the logs and alarms of IPED and LED devices.

Main remote management abilities of SecMan can be summarized as;



Main remote management abilities of SecMan can be summarized as;

- IP Configuration Management
- Tunnel Management
- Alarm Monitoring
- Key Management
- Configuration Back-up Archiving and Reloading