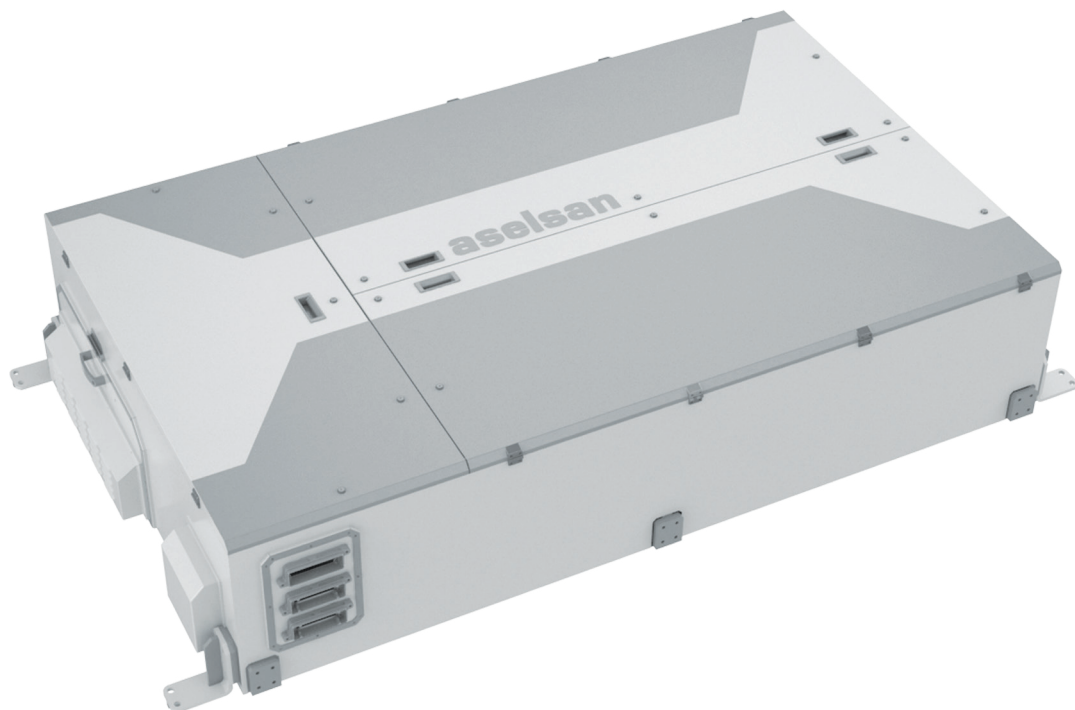


# TROBES

TRAIN ON BOARD ENERGY STORAGE  
AND MANAGEMENT SYSTEM



# TROBES

## TRAIN ON BOARD ENERGY STORAGE AND MANAGEMENT SYSTEM

TROBES is an energy saving system for railway applications. TROBES has a modular structure that can be configured with batteries and/or supercapacitors.

ASELSAN's investment in new battery technologies results in long-life operation with fast recharge capability. The impact of this technology on railway systems is more reliable and cost-effective catenary-free operation of trams.

Catenary-free systems helps improving visual aesthetics of cities, lowering investment costs and enables more flexible designs of railway vehicles

Also apart from catenary-free operation;

- during acceleration, traction motor will be supplied both from catenary and battery/supercapacitor energy,
- during deceleration, with regenerative braking, TROBES will recharge its batteries/supercapacitors.

These all will result in energy saving up to %30.

### General Characteristics

- Modular energy storage structure with Battery and/or Super Capacitor
- Catenary-free operation
- Reducing Infrastructure Investments
- Optimum energy management
- Kinetic energy recovery during braking

