

SeaEye-KUZGUN

ELECTRO-OPTICAL RECONNAISSANCE,
SURVEILLANCE AND TARGETING SYSTEM

HIGH PERFORMANCE IR CAMERA

FULL HD DAY TV CAMERA

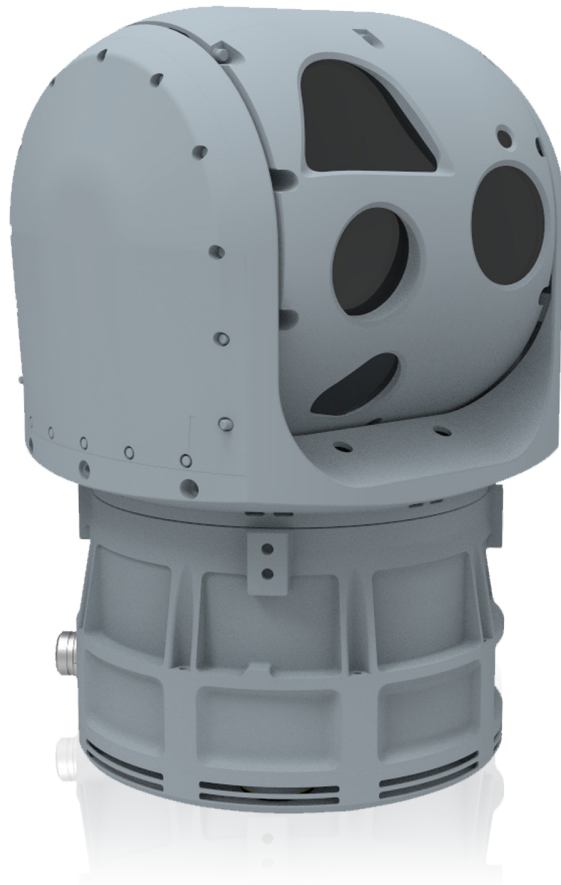
LASER DESIGNATOR

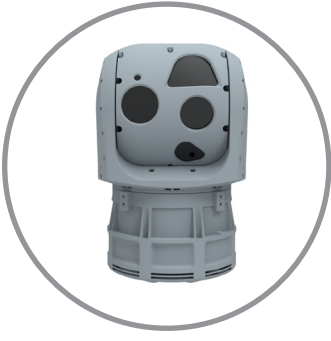
EYE-SAFE LASER RANGE FINDER

LASER POINTER

LASER POINTER

SINGLE LRU





SeaEye-KUZGUN

ELECTRO-OPTICAL RECONNAISSANCE, SURVEILLANCE AND TARGETING SYSTEM

Applications

- Border / Coast Security
- Long Range Detection, Recognition & Identification
- Rescue Operations

Main Features

- 10" Gimbal Size
- High Performance Cooled IR Camera
- Full HD Color Day TV Camera
- Eye-Safe Laser Range Finder
- NIR Laser Pointer
- Inertial Measurement Unit (IMU)
- Compact and Light Design
- Single LRU
- Gyroscopic Stabilization
- GPS Data Input
- Advanced Image Processing
- Automatic Target Tracking

Environmental Conditions

- Environmental Spec : MIL-STD-810G

Technical Specifications

MWIR Camera

- Sensor : 640 x 512 MWIR (3-5 μm)
- Optical Zoom : 10X Continuous
- WFOV : 25° x 20°
- NFOV : 2.0° x 1.6°
- Digital Zoom : 2X, 4X

Day TV Camera

- Sensor Type : Visible CMOS
- Sensor Resolution : 1920 x 1080
- Optical Zoom : 30X Continuous
- WFOV : 63° Azimuth
- NFOV : 2.3° Azimuth
- Digital Zoom : 12X

Laser Range Finder

- Wavelength : 1535 nm
- Measurement Range : 100 m - 20km
- Accuracy : $\pm 5\text{m}$ (1 σ)
- Repetition Rate : 1Hz, Continuous
- Safety Class : Class 1, ANSI-Z136.1-2014

Laser Pointer

- Wavelength : NIR

Gimbal Specifications

- Azimuth Travel Range : 360° Continuous
- Elevation Travel Range : -110°/+90°

General

- Video Output : HD-SDI, Ethernet, PAL
- Control Interface : RS422, Ethernet
- Power Interface : 28 VDC
- Weight : 35 kg
- Dimensions : 25 cm Diameter, 43 cm Height