

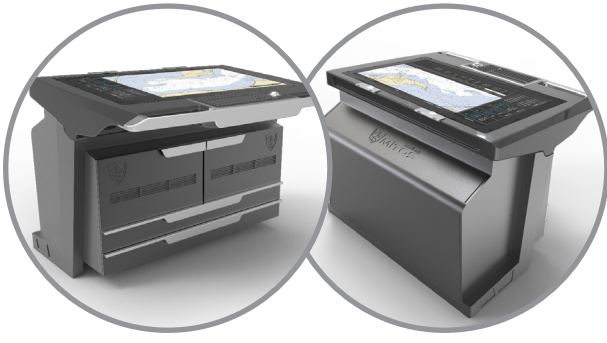
**aselsan**



# ASELSAN MİTOS™ DPT

WARSHIP DIGITAL PLOT TABLE





# ASELSAN MITOS™ DPT

## Warship Digital Plot Table

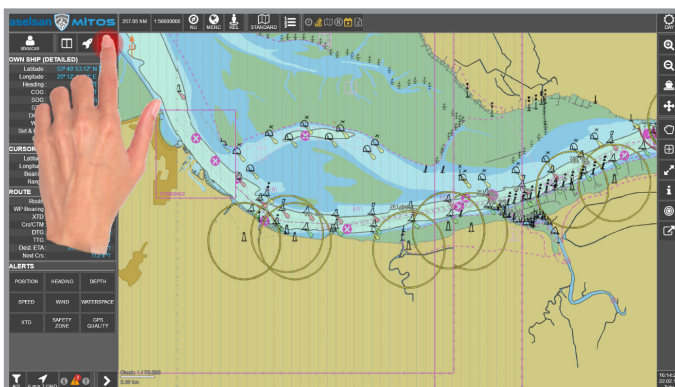
**ASELSAN MITOS™ FAMILY** consists of advanced electronic chart based navigation systems for the surface and subsurface platforms. MITOS family includes WECDIS and Digital Plot Table, developed for military platforms and ECDIS for civilian platforms.

**ASELSAN MITOS™ DPT** is a large screen digital mapping system supplemented with WECDIS functions that displays own and target tracks on a digital chart and provides the navigator to work on paper charts as well as digital charts.

**ASELSAN MITOS™ DPT** offers the route planning and monitoring capability to the ship's crew on navigational charts with using the information such as position, heading and speed from reference systems.

**ASELSAN MITOS™ DPT** is designed to support the operational requirements for naval platforms. Based on MITOS ECDIS features, MITOS DPT provides tactical and situational awareness regarding military functions. System is integrated with navigation and navigational support systems such as Navigation Radar, D/GPS, Magnetic Compass, Speed Log, Echo-Sounder, INS, Gyro Compass, (W)AIS and Meteorological Systems.

**ASELSAN MITOS™ DPT** is high reliable, expandable and scalable according to the needs.



### ASELSAN MITOS™ DPT Features

- Route Planning and Monitoring
- Providing Alarms and Indicators
- Voyage Recording
- Screen Capture
- Radar Image Overlay
- Integration with Data Distribution System (Gyro, GPS, Speed Log, AIS, Anemometer, etc.)
- Navigational Support Functions (Preventing run aground and collision, Lost Torpedo Search, Man Overboard)
- ARPA and WAIS Information Overlay
- Water Space Management
- Paper Chart Compliant

### Specifications

- Intel® Core™ i7 Main Processor (Quad Core)
- 42" Multi-Touch Display
- Keyboard and Trackball
- 1 Gbps Ethernet Interface
- Configurable Serial Interfaces (RS232 / RS422 / RS 485)
- Dual power: 110VAC/220VAC and 24VDC
- IEC 61174, IMO A.817 and STANAG 4564 Compliant Software
- IEC 60945 (protected) Compliant Hardware

