

DCU

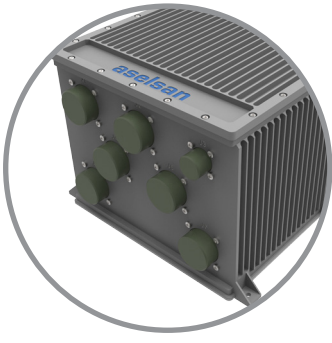
DATA CONCENTRATOR UNIT

NEW
DESIGN

REDUNDANT
OPERATION

SUPPORTS ROTARY AND FIXED WING
AIRCRAFTS





DCU

DATA CONCENTRATOR UNIT

DCU collects analog, discrete and digital data from various avionic and aircraft systems. DCU accomplishes necessary measurements, computations and any logical operations then presents concentrated information to use of avionics and aircraft systems with analog, discrete and digital communication.

With its reliable and rugged design, the DCU meets harsh environmental requirements of various Rotary and Fixed Wing Aircrafts.

General Specifications

- Redundant Operation
- Wide Range of Interfaces
- Reduces Weight and Complexity of Aircraft Systems
- DO-254 Level A Certification

Technical Specifications

- Dual 28VDC Power Input
- Manages and Monitors:
 - Environmental Control System
 - Electrical Power System
 - Equipment and Furnishing System
 - Fire Protection System
 - Fuel System
 - Hydraulic Power System
 - Ice and Rain Protection System
 - Indication and Recording System
 - Landing Gear System
 - Lighting System
 - Pitot Static System
 - Doors System
 - Transmission System
 - Rotor Flight Control System
 - Engine System

Interfaces

- Discrete Signal Input Interfaces (175)
- Discrete Signal Output Interfaces (75)
- Motor Drive Interface
- Analog Current Sense Interfaces (4)
- Analog Voltage Sense Interfaces (11)
- Analog Voltage Output Interfaces (2)
- Strain Gauge Interfaces (9)
- RTD Interfaces (26)
- Magnetic Pick-Up Interface
- Thermocouple Interfaces (6)
- Potentiometer Interfaces (3)
- ARINC-429 Receive Interfaces (20)
- ARINC-429 Transmit Interfaces (7)
- RS-422/485 Receive Interfaces (22)
- RS-422/485 Transmit Interfaces (20)
- MIL-STD-704F 28VDC Power Input

Qualifications

- DO-254
- MIL-STD-810G / DO-160G
- MIL-STD-704F
- MIL-STD-461F

Environmental Conditions

- Operating Temperature and Altitude:
-40°C / +70°C, continuous, 20.000 ft.
- Storage Temperature:
-55°C / +85°C

Physical Specifications

- Dimensions: 215 mm (H) x 250 mm (W) x 220 mm (D)
- Weight: <8 kg