

GMFD-68

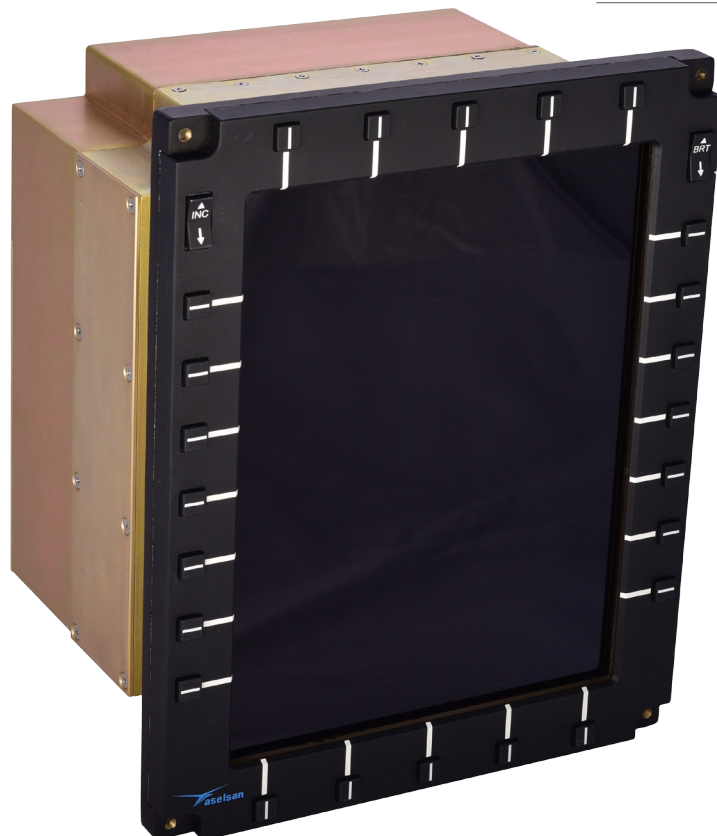
GRAPHICS MULTIFUNCTION DISPLAY

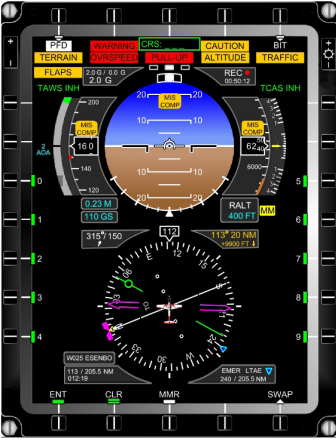
6" x 8" AMLCD
ACTIVE DISPLAY AREA

1024 x 768
RESOLUTION

WIDE
VIEWING ANGLE

INTERNAL SYMBOLOGY GENERATION
INTERNAL DIGITAL MOVING MAP





GMFD-68

GRAPHICS MULTIFUNCTION DISPLAY

GMFD-68 smart multifunctional display is designed by ASELSAN to generate graphical operator interface and to be used in digital map applications by processing data provided by external avionics.

GMFD-68 central cockpit multifunctional display is using Active Matrix Liquid Crystal Display (AMLCD) technology, with an active display area of 6 by 8 inches.

GMFD-68 collects necessary data from other devices on the aircraft and generate and display operational concept graphics using internal processor and graphics processor.

GMFD-68 has the capability to display analog/digital video inputs. GMFD-68 provides to display just external video input, just graphics or external video with graphics overlay. GMFD-68 can also split screen to display external video and graphics or to display two different graphics.

GMFD-68 provides operator interface management capabilities (etc: primary display of flight, cockpit management information, digital map capabilities via bezel mounted function keys.

GMFD-68 detailed maintenance information can be provided via RS-485 interface.

General Specifications

- 1x SMPTE-292 HD-SDI Video Input
- 2 x Display Port 1.1A Digital Video Inputs
- 2 x Display Port 1.1A Digital Video Output
- 2 x S-Video Analog Video Input
- 2 x S-Video Analog Video Output
- Analog Audio Output
- High Luminance
- NVIS Class B Compatible
- User Configurable Bezel Keys
- Portrait / Landscape Selection
- Compact Design
- Easy to Integrate

Display Specifications

- Display Type : Color Active Matrix Liquid Crystal Display
- Display Area : 6" x 8" (10" diagonal)
- Resolution : 1024 x 768 (124 color groups per inch)
- Display Color : 16.2 million colors
- Viewing Envelope : +/- 70° horizontal +/- 70° vertical
- Luminance Range : 0.03 fL - 300 fL
- NVIS Compatibility : MIL-STD-3009, Class B

Interfaces

- Communication Interfaces: ARINC-429, ARINC-708, Ethernet, RS-485, RS-232, discrete interfaces
- Video: SMPTE-292 HD-SDI Digital Video Input, S-Video(RS-170, PAL, NTSC) Input, S-Video(PAL/NTSC) Output, Display Port 1.1A Digital Video Input, Display Port 1.1A Digital Video Output, Analog Audio Output
- Input Power: 28 VDC

Qualifications

- MIL-STD-810
- MIL-STD-461
- RTCA DO-160G

Physical Specifications

- Dimensions: 262 mm (H) x 210 mm (W) x 176 mm (D)
- Weight: < 6.5 kg