

MKB-331

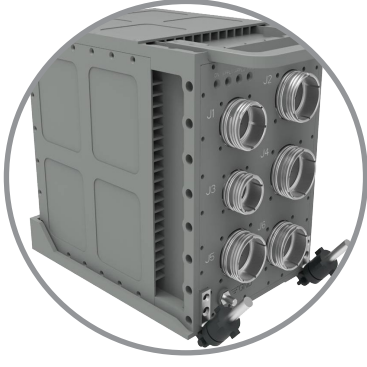
CENTRAL CONTROL COMPUTER

MISSION AND USER INTERFACE
MANAGEMENT

REDUNDANT
OPERATION

FIXED, ROTARY WING PLATFORM
QUALIFIED





MKB-331

CENTRAL CONTROL COMPUTER

MKB-331 Central Control Computer is the key for mission success. MKB-331 is the mission computer which manages avionics, supports pilot with its advance processing capability, and provides relevant data to the pilot collected from aircraft systems.

Modular hardware and software design, large memory capacity, high processing capability and multiple interface support of MKB-331 provides the capability to be integrated into various air platforms and applications.

With its reliable and rugged design, MKB-331 operates in severe environmental conditions on fixed-wing and rotary-wing platforms with the advanced cooling and thermal management techniques.

Having flexible and scalable industry standard open architecture design, MKB-331 meets customer and platform requirements.

General Specifications

- System Management
- Operator Interface Management
- Communications Management
- Navigation Management
- Warning / Caution and Aural Warning Management
- Weapon System Management
- Failure Collecting and Reporting
- Data Bus Management
- Emergency/Auxiliary Operations and Zeroization Management

Technical Specifications

- PowerPC Computing Processors
- ATR Form Factor, Air Cooled Chassis
 - 3U CPCI slots
 - MIL-DTL-38999 Connectors
- Power Hold-up for Short Power Interrupts
- DO-254 Level B Certified Hardware
- DO-178B Level B Certified Software
- Green Hills Integrity Real Time Operating System (RTOS)
- Board Support Packages and Drivers Compatible to Real Time Operating Systems
- Built In Test (BIT) Capabilities

Interfaces

- ARINC 429 Tx/Rx
- MIL-STD-1553B
- Ethernet
- RS-232
- RS-485
- Discrete Input/Output
- Analog Input/Output
- Analog Audio Output

Qualifications

- MIL-STD-810F
- MIL-STD-461F
- RTCA DO-160G

Environmental Conditions

- Operating Temperature and Altitude
: -55°C, +70°C, 35.000 ft.
- Storage Temperature
: -55°C, +85°C

Physical Specifications

- Dimensions: 210 mm (H) x 156 mm (W) x 256 mm (D)
- Weight: <8.1 kg